

Revision Record

Date	Version	Revision
7/3/2026	2.0.3.7	Compatible with hardware version with 32 GB internal storage
1/14/2026	2.0.3.5	<ol style="list-style-type: none"> 1. Decode: Added Spacewire, USB2.0, CAN XL 2. Measure: <ol style="list-style-type: none"> a) Added item: UpperLower b) Added Source: ZFx, ZMx c) Supported zoom in the measure histogram 3. Cursors: Supported to hide Y cursors in track mode 4. Math: <ol style="list-style-type: none"> a) Supported up to 8 traces b) Added operators: Envelope, tan, atan, FFT Phase c) FFT : peak added delta display; marker added ordering by number, amplitude and frequency d) FFT: Added windows Blackman-Harris and Gaussian e) Supported to hide traces 5. Analysis: <ol style="list-style-type: none"> a) SignalScan added decode search b) Eye Diagram: added Vpp measurement 6. REF: Supported to hide traces 7. Zoom: <ol style="list-style-type: none"> a) ZFx supported to set horizontal scale independently; ZFx, ZMx supported to synchronize the display region with Zx b) Supported to set Zx' vertical scale with unified adjustment 8. Roll: <ol style="list-style-type: none"> a) Supported decode in Stop mode b) Supported Roll + Zoom in fast display mode 9. Prode: Supported CP150, HVD3106A; Supported to set external scaling of SAP2500D 10. Save/Recall: <ol style="list-style-type: none"> a) Autosave supported to save pictures b) Supported to save all channels' data to a single file c) FileManager: Supported to view a picture in full screen mode 11. Display: <ol style="list-style-type: none"> a) Axis label supported to set the vertical label on center and right b) Supported to change the font size 12. System: Time/date supported NTP; Supported education mode 13. Webserver: supported inverted screenshot (according to the Image style setting in the Save menu) ; Added Run/Stop virtual button 14. SCPI: Added command MANual to support to set Amplitude Strategy of Measure 15. Fixed several bugs

Date	Version	Revision
		16. Sending SCPI commands continuously lead the instrument to frozen state
6/29/2024	1.0.7.9	Made Option 16LA Standard
3/28/2024	1.0.7.8	Fixed several bugs <ul style="list-style-type: none"> a) Cannot exit from Bode plot in some case b) Cannot detect active probes correctly when the probes are connected at power-on c) "Set to 50% level" takes the scope frozen in some case d) Sample rate is displayed incorrectly after reboot from Fixed Memory Length mode
9/6/2023	1.0.6.3	<ol style="list-style-type: none"> 1. Fixed some serious bugs in Roll and Sequence 2. Optimized external trigger jitter 3. Fixed some freezing bugs
2/9/2023	1..0.5.3	<ol style="list-style-type: none"> 1. Added Multi-Device mode, supporting automatically skew calibration between devices 2. Fixed some serious bugs in Zone Trigger, serial trigger and Mask test 3. Fixed several bugs
	1.0.4.6	1 st release

Version Compatibility

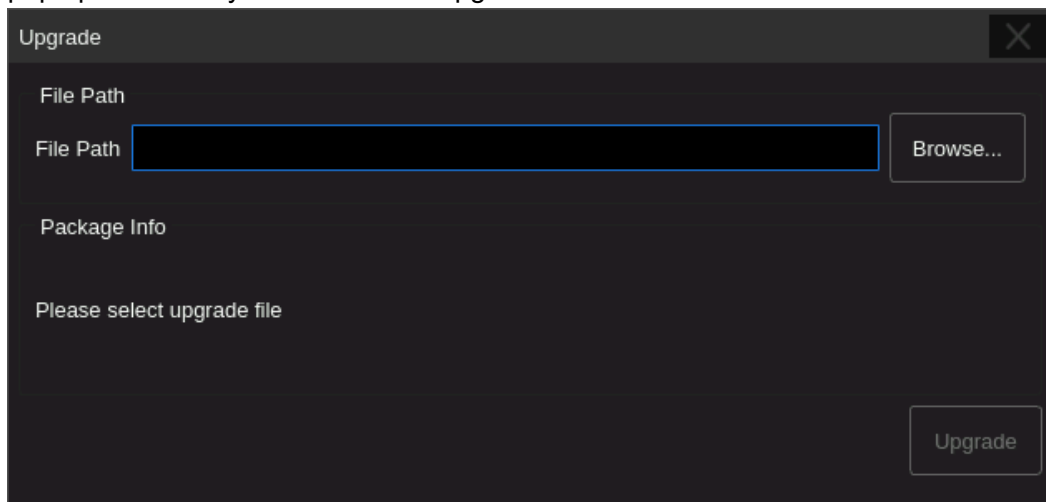
Source Version	Object Version	Compatibility
1.0.6.3	2.0.3.5	Tested
1.0.6.3	1.0.7.9	Tested
1.0.6.3	1.0.7.8	Tested
1.0.5.3	1.0.6.3	Tested
1.0.4.6	1.0.6.3	Tested

Upgrade Instructions

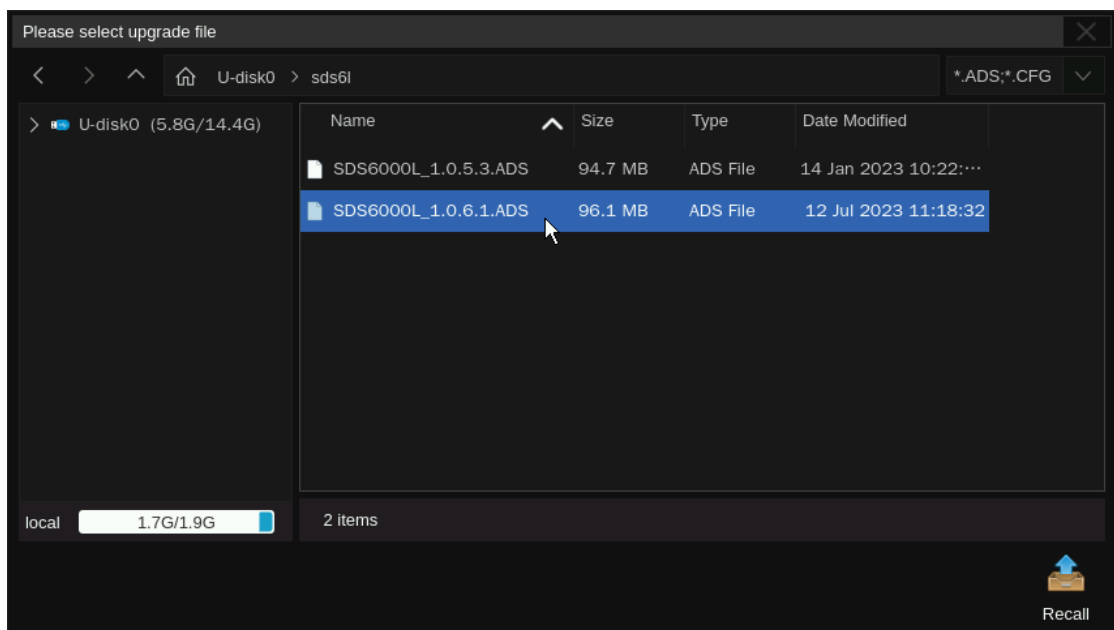
Upgrade from a U-disk (USB Memory device)

WARNING: DO NOT shut off the instrument until the update is completed.

1. Copy the update file (*.ads) to a FLASH type U-disk, and then insert the U-disk into one of the USB host ports of the instrument.
2. Press "**Utility** -> **Menu** -> **Maintenance** -> **Upgrade**". The following the menu should pop up and allow you to select the upgrade file

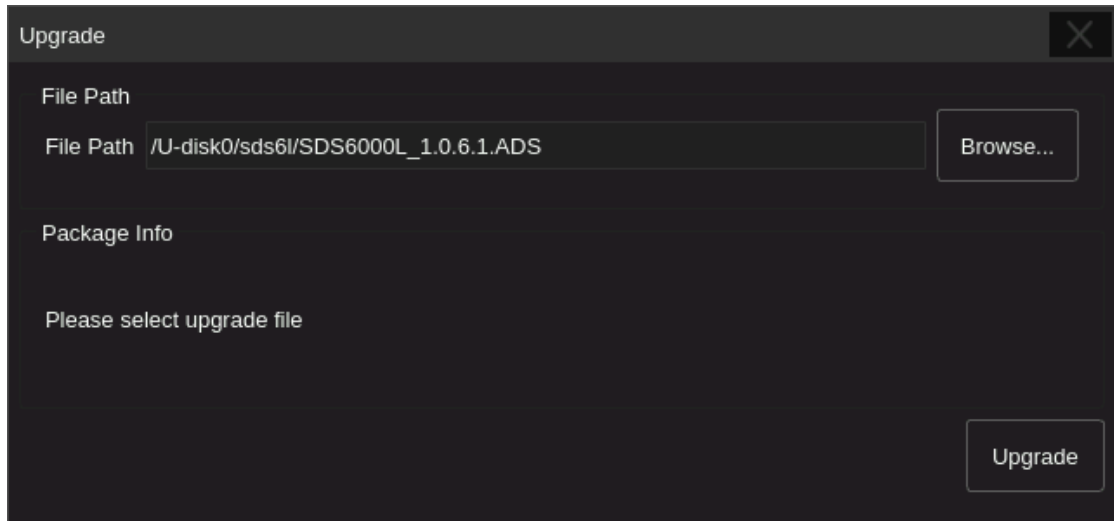


3. Click **Browse** in the menu above, and then select the correct update file (*.ads) in the pop-up resource manager

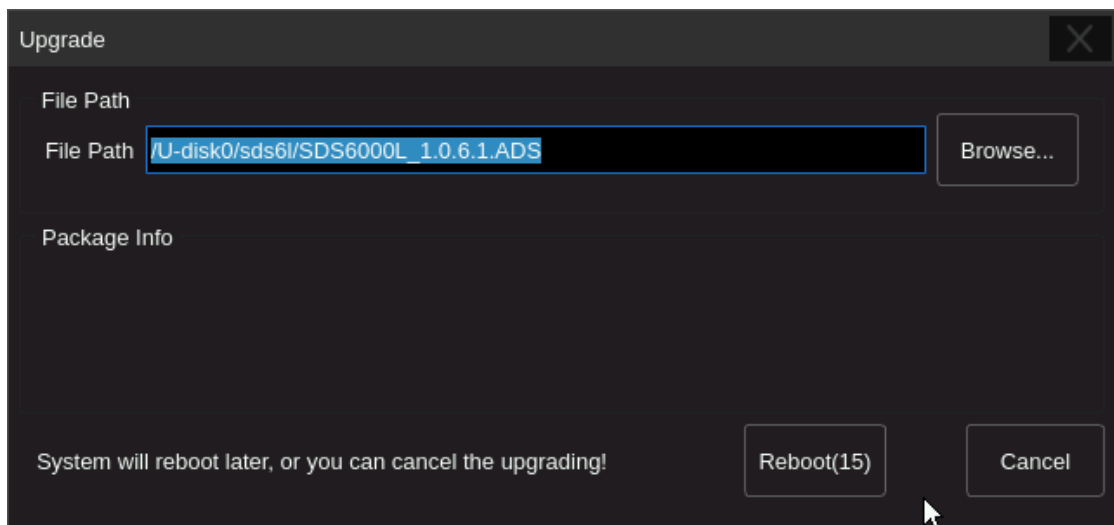


4. Click the recall icon  in the interface above and return to the upgrade dialog.

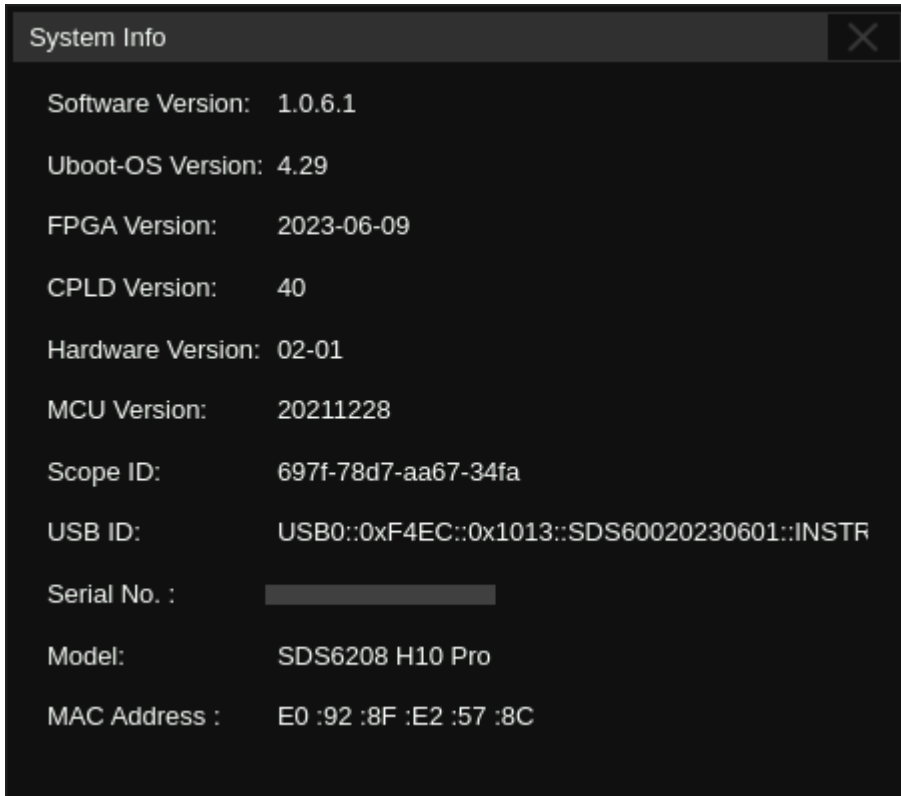
Click **Upgrade** to perform the upgrade operation:



5. The system will first copy and verify the upgrade package. After the upgrade package is validated, the following interface will appear. Click **Reboot** to continue the upgrade, or click **Cancel** to cancel it.



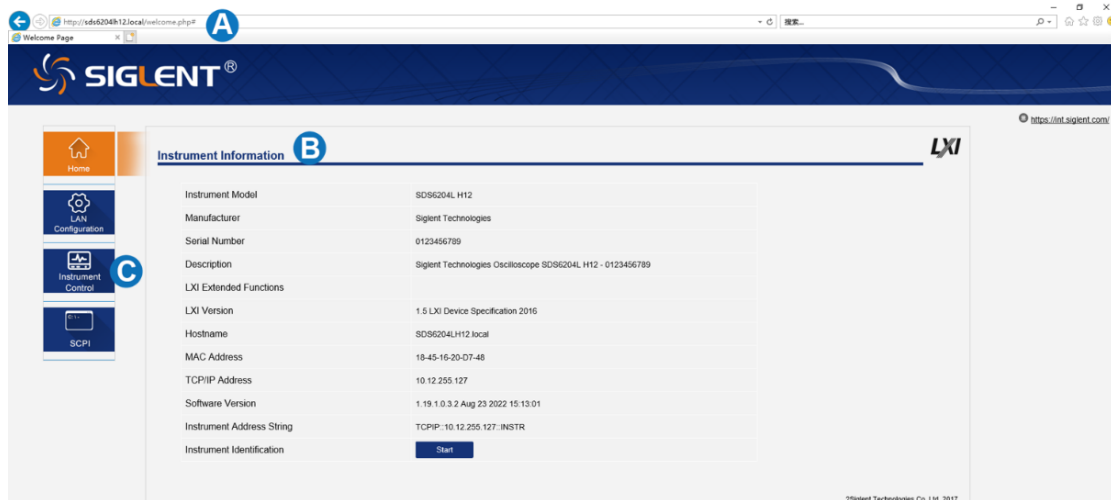
6. After the instrument reboots, check the version number through the **Utility** -> **Menu** -> **System Info** to confirm if the upgrade is successful.



WARNING: DO NOT shut off the instrument until the update is completed.

Upgrade from the Web Server

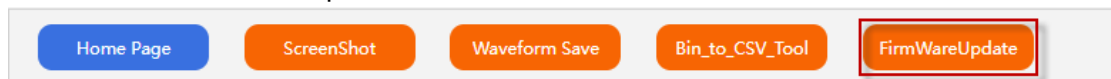
A built-in web server provides an approach to control the instrument by web browser. This process doesn't require any additional software to be installed on the controlling computer. Set the LAN port correctly (see the User Manual for details), input the IP address of the instrument in the browser address bar, and then the user can browse and control the instrument on the web.



- A. Input the IP address of the instrument
- B. Instrument information
- C. Click here to recall the instrument control interface

WARNING: DO NOT shut off the instrument until the update is completed.

1. Click the "FirmwareUpdate" button in the web interface



2. Select the correct update file (*.ads) stored on the computer. The instrument will automatically download the update file and perform the upgrade once the file is specified.

WARNING: DO NOT shut off the instrument until the update is completed.